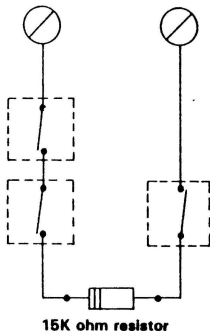


# MODEL MC-3 INSTALLATION INSTRUCTIONS

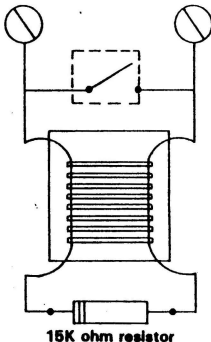
TERMINALS	FUNCTION	WIRING INSTRUCTIONS
1 and 2	Protective Circuits (Instant)	Both closed circuit (N.C.) and open circuit (N.O.) contacts and detectors may be used on the Instant Circuit. Closed circuit contacts must be wired in series and open circuit contacts must be wired in parallel to End of Line Resistor. (See Illustration 1). Circuits wired to these terminals will provide instant activation of alarm output when loop (protective circuit) has been violated (Mini Controller armed). A maintained shunt lock (Telsarlock or Key Type) is used to operate mini-controller.
3 and 4	Key Switch Arm/Disarm/Reset	When the key switch is open, controller is armed. When key switch is closed, the controller is disarmed.
5 [+ ] and 6 [- ]	Input Power	6 to 12 VDC input from regulated filtered source or 6 to 12 volt battery (1.5 Amp hour recommended). Connect negative (-) input to terminal 6 and positive (+) input to terminal 5.
	Auxiliary Power	Connections for auxiliary equipment are made from terminals 5 and 6 providing power for digital key pads, motion detectors, dialers, etc. Observe polarity when making connections to terminals or damage could result to Mini Controller, power source or auxiliary equipment.
7 [- ] and 8 [+ ]	Alarm Output	Alarm output provides at 1.5 Amp (max) to drive bells, siren drivers, digital dialers etc.
	Automatic Shutdown	Alarm output automatically shuts down after 15 min. (approx.) if the protective circuit(a) violated is restored to it's non-violated condition, Mini Controller may be reset and re-armed by keyswitch.
	Continuous Alarm Output	Continuous Alarm Output is available if desired. For continuous output, cut Jumper J-1 located at upper left corner of Mini Controller. Alarm output will be continuous until shutdown with keyswitch.
	Fused Output	When connecting equipment to alarm output observe polarity if necessary. Use 18 gauge wire (or larger for long runs) to minimize voltage loss to sounding device. Model MC-3 Mini Controller is fully protected by 2 Amp fused output and input polarity protection diode. <b>DO NOT EXCEED FUSE RATING</b> , otherwise, serious damage to Mini Controller will result. Fuse type 3 AG 2 Amp fast blow.

## ILLUSTRATION 1

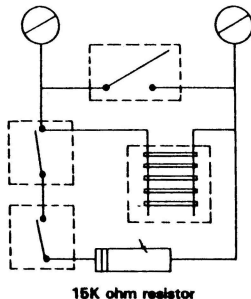
Closed circuit devices



Open circuit devices



Both closed and open circuit devices



Connect closed circuit contacts and devices in series with End of Line loop resistor.

Connect open circuit contacts, pressure mat, etc. in parallel with End of Line resistor.

Combination of closed and open circuit contacts, devices, pressure mat, etc., with End of Line resistor in series with closed loop devices.